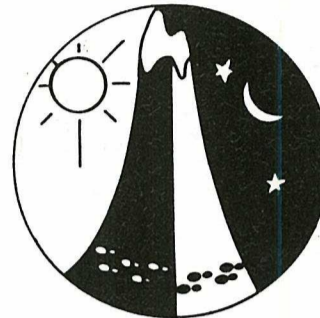


CENTURY END



12 HOUR SPRING ROGAINE
23rd OCTOBER 1999

WESTERN AUSTRALIAN



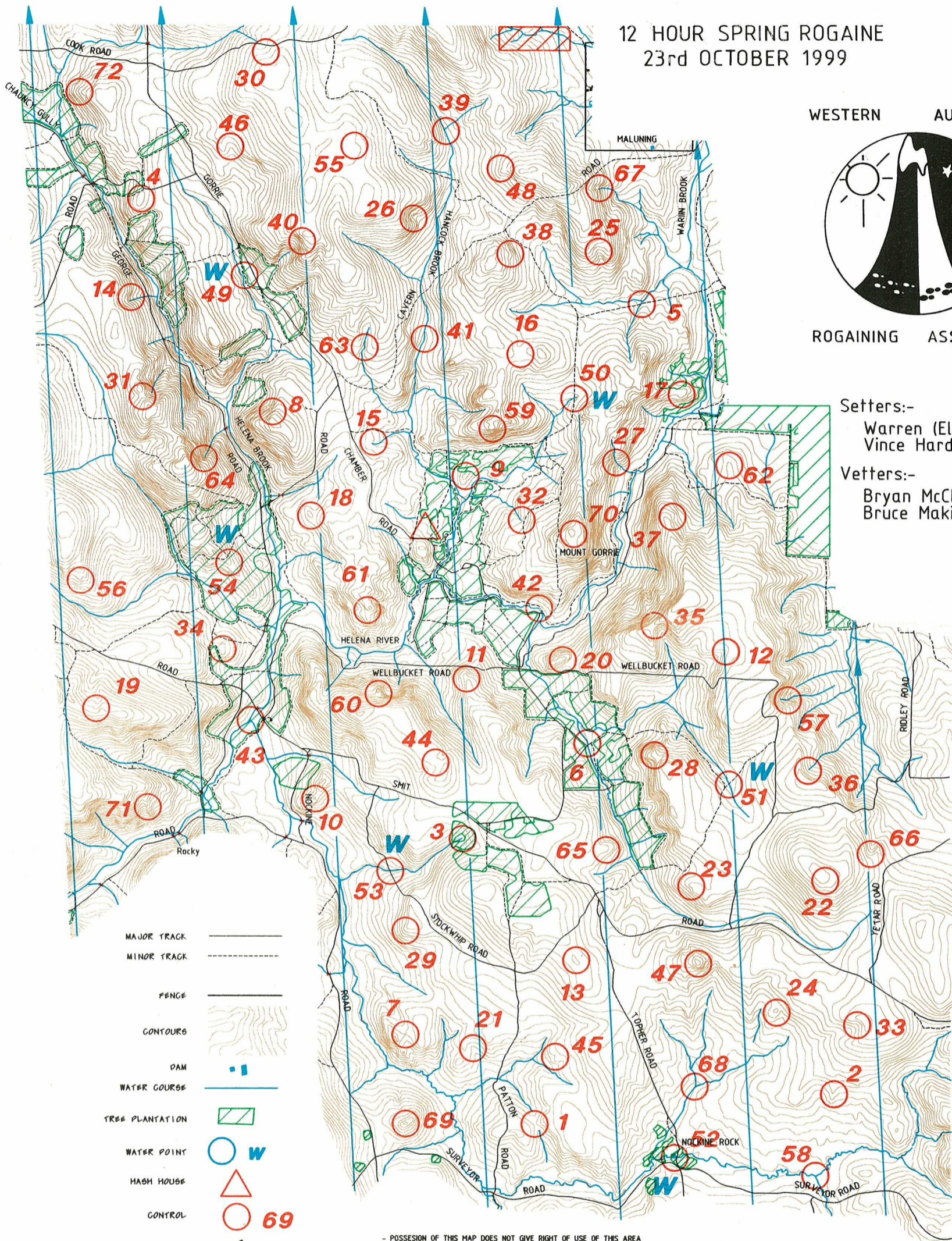
ROGAING ASSOCIATION

Setters:-

Warren (El Prez) Smith
Vince Harding

Vetters:-

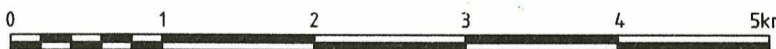
Bryan McClintock
Bruce Makin



- MAJOR TRACK ———
- MINOR TRACK - - - - -
- FENCE ———
- CONTOURS (contour lines)
- DAM ———
- WATER COURSE (blue line)
- TREE PLANTATION (hatched area)
- WATER POINT (blue circle with 'W')
- HASH HOUSE (red triangle)
- CONTROL (red circle with number)
- BUILDINGS (black squares)
- CULVERT/CROSSING (red double line)
- OUT OF BOUNDS (red hatched area)

- POSSESSION OF THIS MAP DOES NOT GIVE RIGHT OF USE OF THIS AREA
- MAP PRODUCED BY VINCE HARDING USING CONTOURS AND CATOGRAPHY FROM D.O.L.A. - COPY LICENCE 393/93. MAP CREATED USING MICROSTATION. THANKS TO MARTY STAMATIS FOR HIS ON GOING ASSISTANCE.
- THANKS TO C.A.L.M. AND THE WATER CORPORATION FOR PERMISSION TO USE THIS AREA.

GRAPHIC SCALE 1:50,000
5 METER CONTOURS



CENTURY END 12 Hour Rogaine, October 23th 1999

No.	Description	Points	No.	Description	Points	
1	The Saddle	10	37	Northern side of 2 metre Boulder Cluster	50	Important Information
2	On the Spur	10	38	A Large Rock Surface	50	
3	Head of the Watercourse	10	39	The Creek Junction - Z Bends	50	
4	The Summit	10	40	Amongst the Boulder Clusters	50	
5	Track/Creek crossing - 45 metres @ 20 degrees	10	41	A Creek Bend	50	
6	Creek Bend	10	42	A bend in the Creek	50	
7	The Saddle	20	43	A Creek Bend	60	Control Cards From 09:30am Sat.
8	Head of a Broad Gully	20	44	The Broad Saddle	60	
9	The Knoll	20	45	Head of a Gully	60	
10	The Knoll	20	46	Head of the Gully	60	Briefing 09:45am Sat.
11	A Saddle	20	47	The Summit	60	
12	In the Watercourse	20	48	North/East Corner of large Roack Surface	60	Start 10:00am Sat.
13	The Broad Summit	30	49	Track/Watercourse Junction - 16 metres @ 280 degees	70	Finish 12 hours later
14	Base of a 10 metre Rocky Outcrop	30	50	Track/Creek Crossing - 45 metres @ 60 degrees	70	
15	Small Rocky Spur meets watercourse	30	51	Track/Creek Crossing - 30 metres @ 130 degrees	70	Hash House Open 04:00pm Sat. Closed 11:00pm Sat. Open 07:00am Sun. Closed 09:00am Sun.
16	The Broad Saddle	30	52	South Side of Pool	70	
17	A Rocky Knoll on the Spur	30	53	Track/Creek Crossing - 30 metres @ 90 degrees	70	
18	The Summit	30	54	A Boulder Cluster	70	
19	Head of a Gully	30	55	Western End of 150 x 100 metre Clearing	80	
20	A Knoll	30	56	The Spur	80	
21	Head of the Gully	30	57	In the Watercourse	80	Water at Controls:- 49, 50, 51, 52, 53 &54
22	South/East end of the Summit	30	58	The Creek Junction	80	Astronomical Sunset Saturday 06:33pm
23	The Big Toe (on the spur)	30	59	A Knoll on the Spur - (Great Veiws)	80	
24	The Knoll	30	60	The Knoll - (South Side)	80	Moonrise Saturday 04:50pm
25	In the Gully	40	61	Southen Tip of 50 x 75 metre Rock Surface	90	Controls Used 72
26	Head of a Shallow Gully	40	62	A Rocky Knoll on the Spur	90	
27	In the Watercourse - amongst the Boulders	40	63	In the Gully - Bend in the Watercourse	90	
28	The Spur	40	64	In the Deep Gully	90	
29	On the Spur	40	65	The Spur	90	
30	In the Broad Gully	40	66	Head of the Gully	90	
31	The Saddle	50	67	Head of the Watercourse	100	Total Points 3780
32	Head of the Gully	50	68	Watercourse Junction	100	
33	Head of the Gully	50	69	The Summit	100	Controls Used 72
34	The Summit	50	70	The Summit	100	
35	The Saddle	50	71	On the Spur	100	
36	Head of the Watercourse	50	72	On the Rocky Spur	100	
This Column Points		1080	This Column Points		2700	
WATER DROPS:-						
49	Track/Watercourse Junction - 16 metres @ 280 degees		52	South Side of Pool		
50	Track/Creek Crossing - 45 metres @ 60 degrees		53	Track/Creek Crossing - 30 metres @ 90 degrees		
51	Track/Creek Crossing - 30 metres @ 130 degrees		54	A Boulder Cluster		